

# FOR LEASE

## TROPICAL PLAZA



- ADDRESS:** 1740 Hwy US 1; Stuart, FL
- PROPERTY SIZE:** 5,500 SF Unit
- ZONING:** Commercial Retail
- LEASE AMOUNT:** \$15/SF (Base) + \$3/SF (CAM)
- COMMENTS:** Freestanding building located on busy Hwy US 1. Excellent exposure for any retail business.

EXCLUSIVELY LISTED BY...

759 S. Federal Highway, Ste. 304  
Stuart, Florida 34994  
[www.ChristensonCommercial.com](http://www.ChristensonCommercial.com)

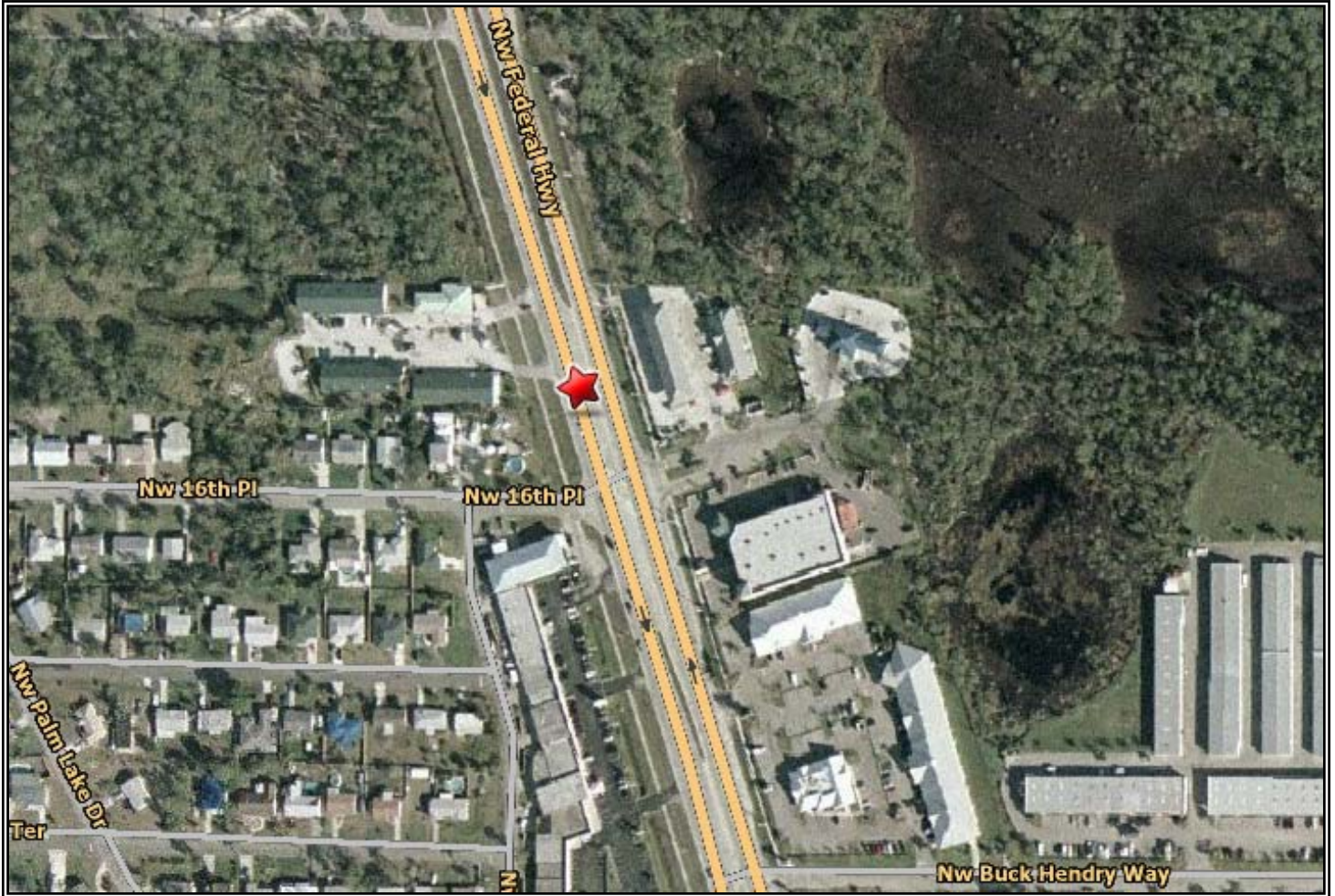
**Christenson**  
**Commercial**  
**REAL ESTATE**

**For Additional Information Contact:**

Derrick Christenson  
Office: (772) 419-5076  
[Derricksoldit@aol.com](mailto:Derricksoldit@aol.com)

The above information has been obtained from sources we consider reliable, but we do not guarantee it; submitted subject to errors, prior sale, withdrawal, or change in price or terms and conditions without notice.

# TROPICAL PLAZA



**1740 HIGHWAY US 1  
STUART, FL 34994**

EXCLUSIVELY LISTED BY...

**Christenson  
Commercial**  
REAL ESTATE

759 S. Federal Highway, Ste. 304  
Stuart, Florida 34994

[www.ChristensonCommercial.com](http://www.ChristensonCommercial.com)