

FOR LEASE

R.W. CONTRACTOR'S WAREHOUSING



- ADDRESS:** 613 & 615 NW Mercantile Place; Port St. Lucie, FL
- PROPERTY SIZE:** (2) 2,500 SF units for a total of 5,000 Total SF
- ZONING:** Light Industrial
- LEASE AMOUNT:** \$8.50/SF (Gross)
- COMMENTS:** Two 2,500 SF units that may be combined or divided.
These combined units have extensive office build out with high end finishes.
The units come with 3-phase power, (2) 12x12 overhead doors, impact resistant doors and glass. Ready for occupancy immediately. Located in the Saint Lucie West area and just seconds from I-95.

EXCLUSIVELY LISTED BY...

759 S. Federal Highway, Ste. 304
Stuart, Florida 34994

www.ChristensonCommercial.com

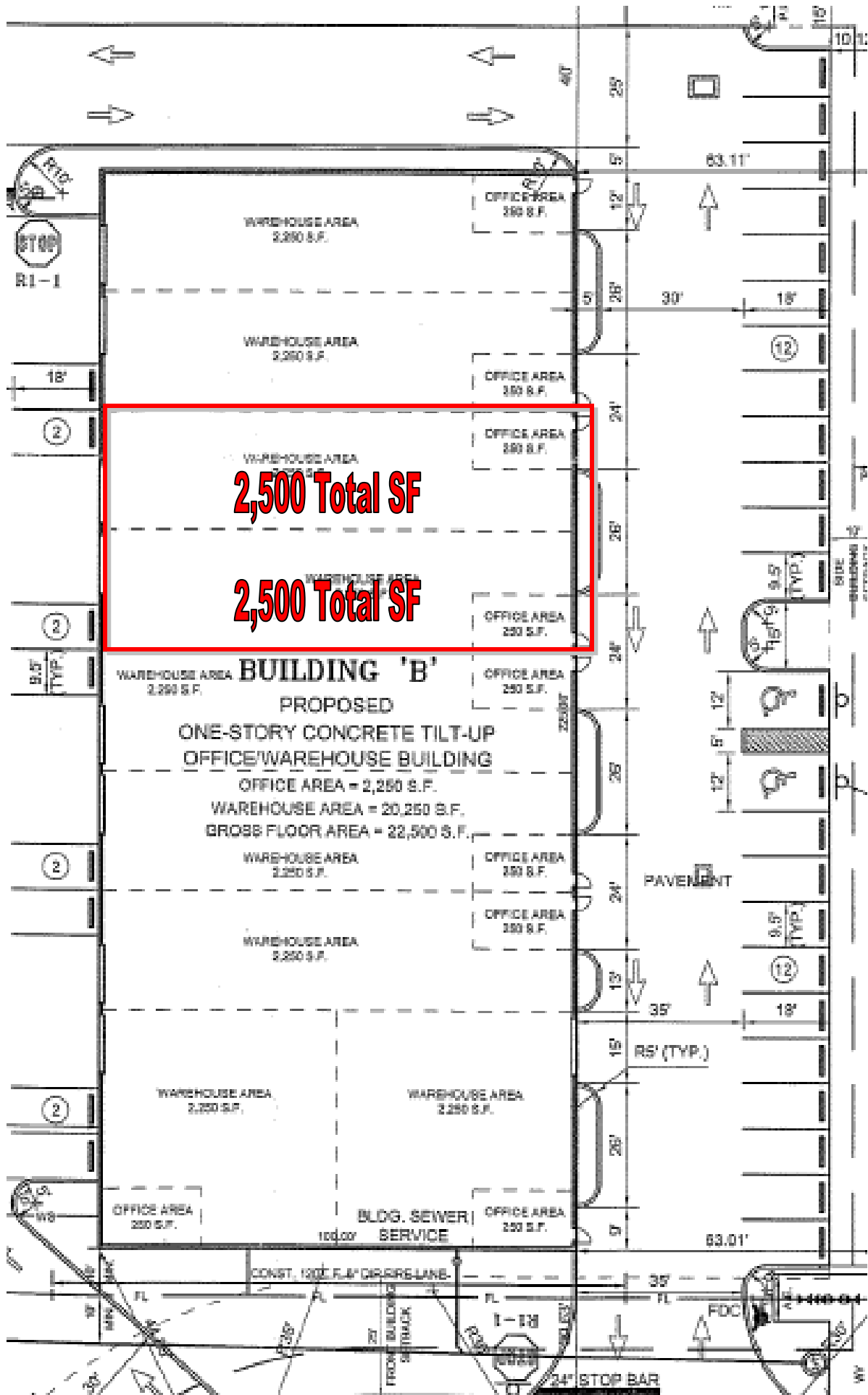
**Christenson
Commercial**
REAL ESTATE

For Additional Information Contact:

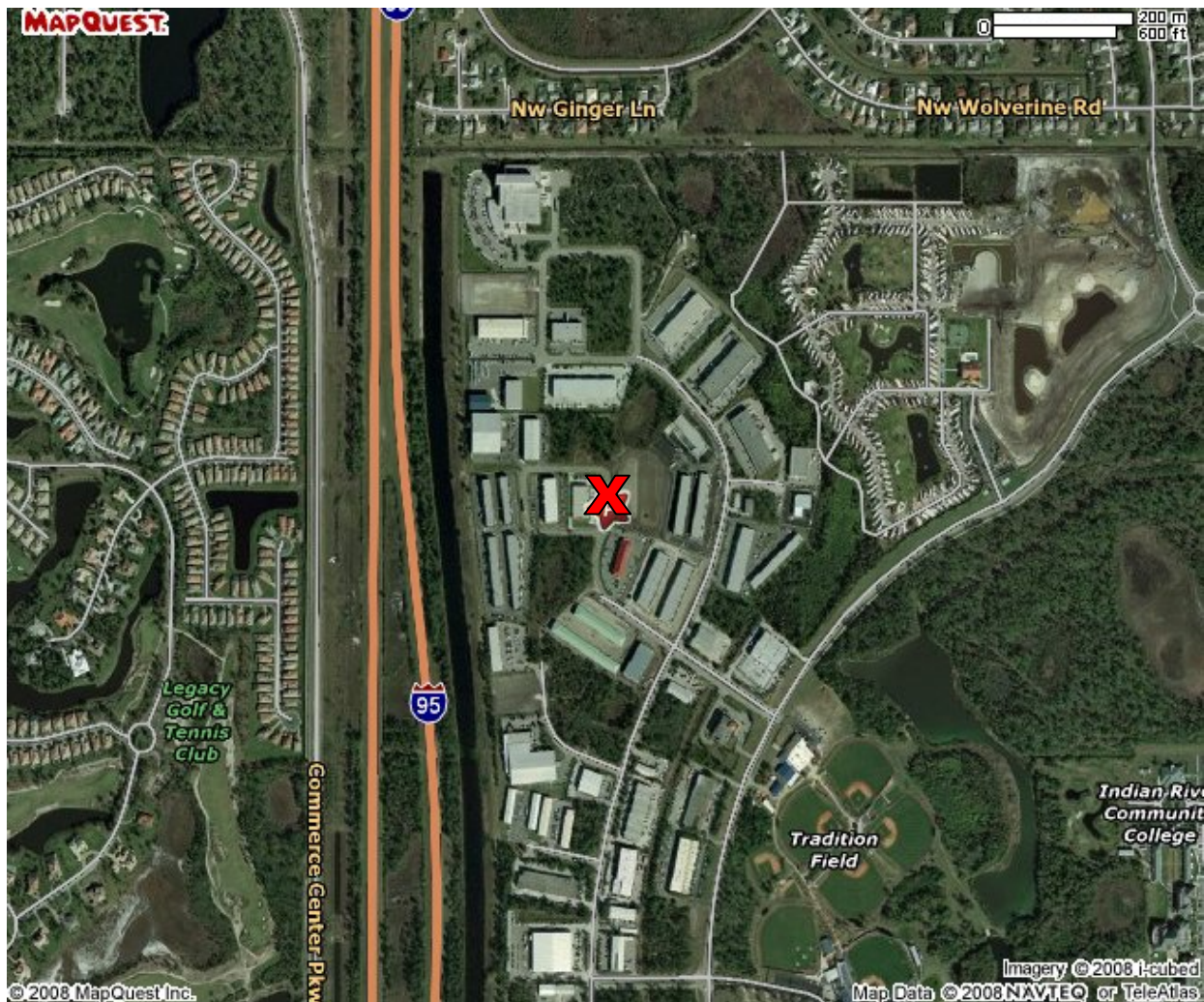
Derrick Christenson
(772) 419-5076

Derricksoldit@aol.com

The above information has been obtained from sources we consider reliable, but we do not guarantee it; submitted subject to errors, prior sale, withdrawal, or change in price or terms and conditions without notice.



RW CONTRACTOR'S WAREHOUSING



613 & 615 NW MERCANTILE PLACE
PORT SAINT LUCIE, FL 34986

EXCLUSIVELY LISTED BY...

**Christenson
Commercial**
REAL ESTATE

759 S. Federal Highway, Ste. 304
Stuart, Florida 34994

www.ChristensonCommercial.com