

FOR LEASE

OFFICE WAREHOUSE SAINT LUCIE WEST



- ADDRESS:** 590 NW Mercantile Place; Port St. Lucie, FL
- PROPERTY SIZE:** 9,372 SF
- ZONING:** Light Industrial
- LEASE AMOUNT:** \$10/SF (Gross)
- COMMENTS:** This 2-story unit has 5,500 SF of fully A/C office, ADA-compliant restroom(s), large conference room, lunch room, high-end finishes, ample storage, 12x14 overhead door(s), and impact glass. Floor plan is ideal for a company looking for more office ratios. Building is conveniently located just seconds from I-95.

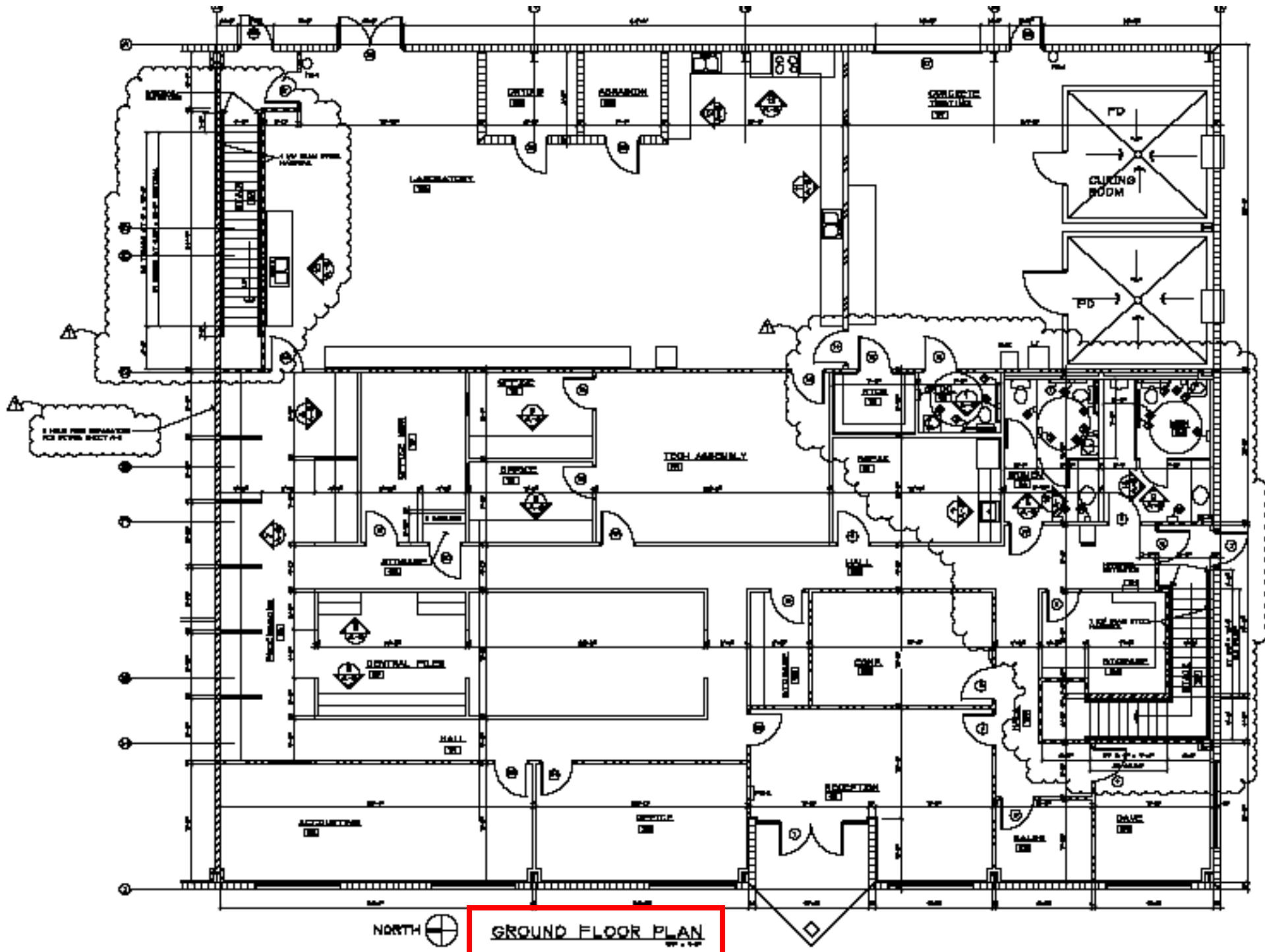
EXCLUSIVELY LISTED BY...

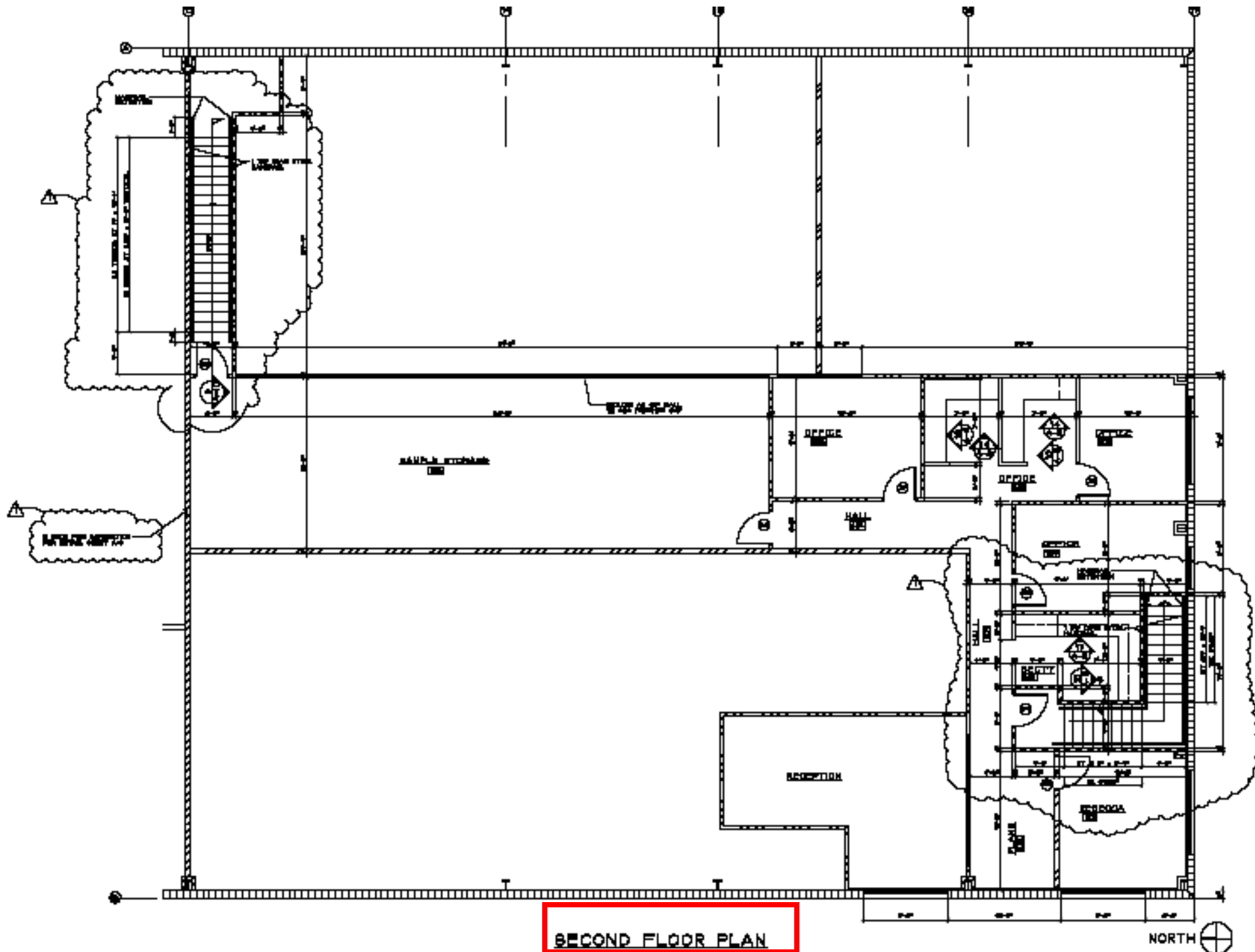
759 S. Federal Highway, Ste. 304
Stuart, Florida 34994
www.ChristensonCommercial.com

**Christenson
Commercial**
REAL ESTATE

For Additional Information Contact:
Derrick Christenson
(772) 201-3154
Derricksoldit@aol.com

The above information has been obtained from sources we consider reliable, but we do not guarantee it; submitted subject to errors, prior sale, withdrawal, or change in price or terms and conditions without notice.

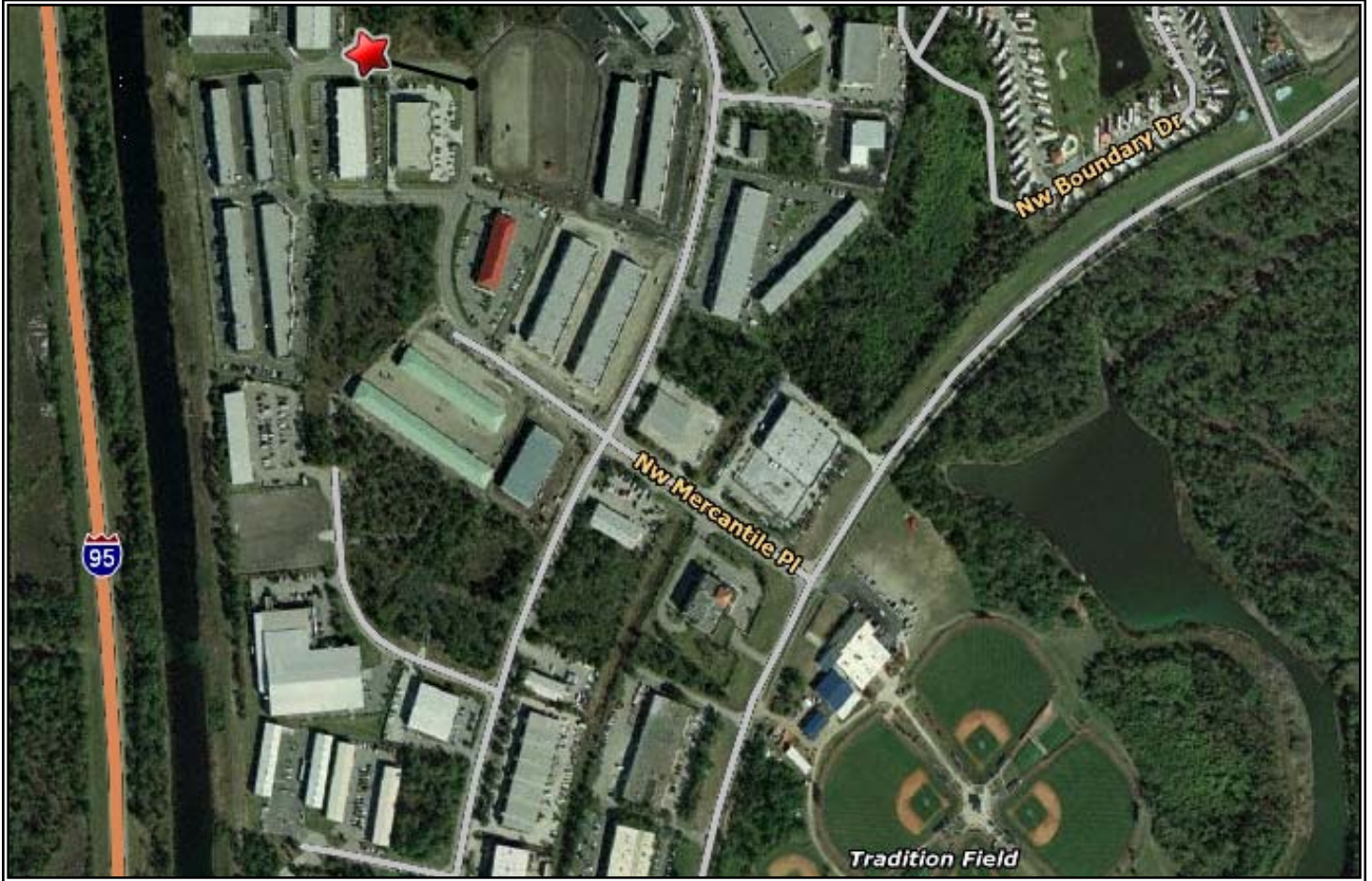




SECOND FLOOR PLAN

NORTH

MERCANTILE VENTURES



590 NW MERCANTILE PLACE
PORT ST. LUCIE, FL 34986

EXCLUSIVELY LISTED BY...

Christenson
Commercial
REAL ESTATE

759 S. Federal Highway, Ste. 304
Stuart, Florida 34994

www.ChristensonCommercial.com