

FOR SALE

Office/Warehouse/Condo

LAKE WHITNEY BUSINESS PARK



- ADDRESS:** 410 NW Lake Whitney Place; Port St. Lucie, FL
- PROPERTY SIZE:** 3,775 SF
- ZONING:** Commercial Services
- PURCHASE PRICE:** \$369,000
- COMMENTS:** This office/warehouse/condo features; concrete construction, (1) 20x14 overhead door, 602 SF of finished office and (1) handicap accessible bathroom.
- LOCATION:** Lake Whitney Business Park is located in Saint Lucie West just off Peacock Blvd. across from QVC and the Post Office. This is the best warehouse location in Saint Lucie West.

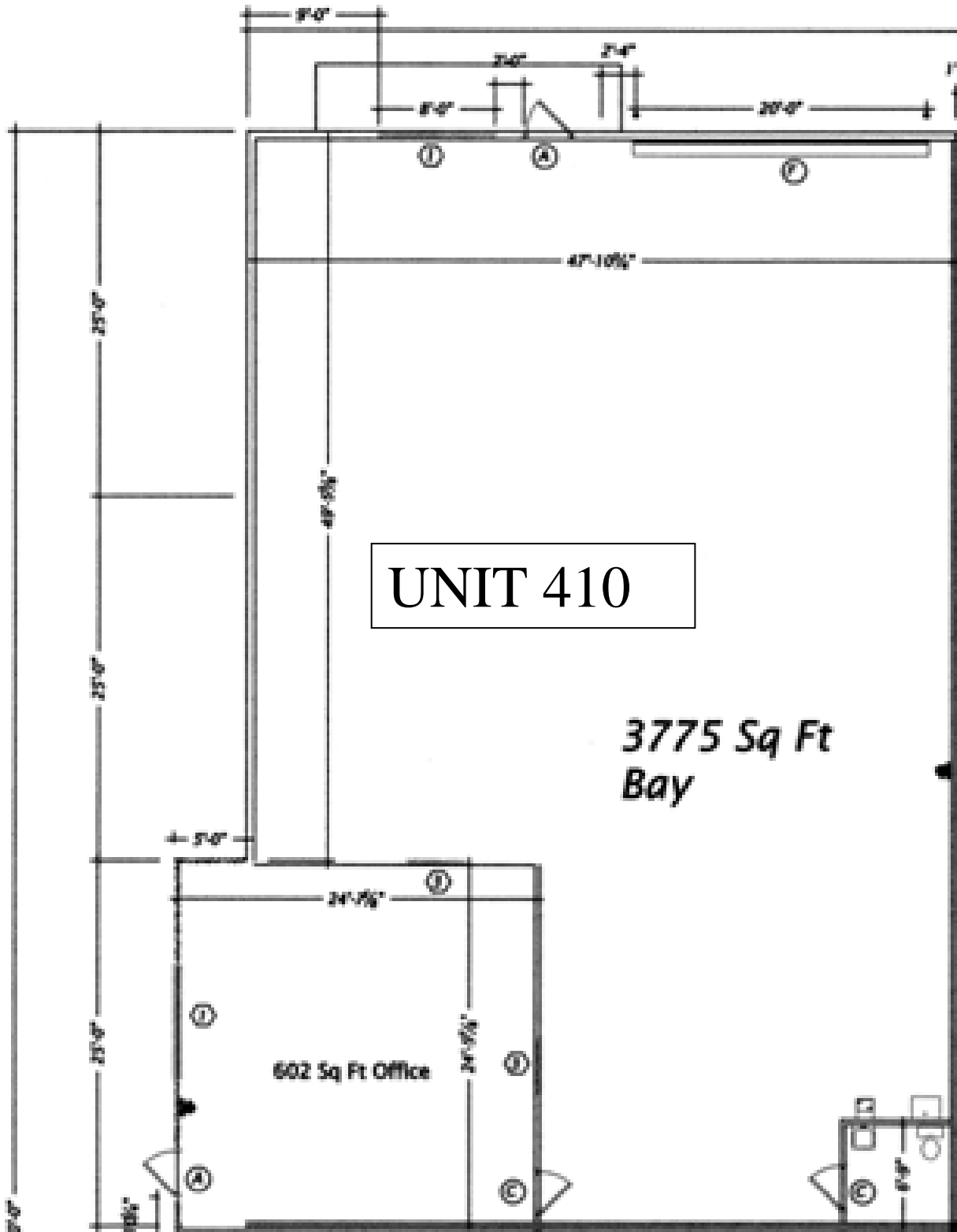
EXCLUSIVELY LISTED BY...

759 S. Federal Highway, Ste. 304
Stuart, Florida 34994
www.ChristensonCommercial.com

Christenson
Commercial
REAL ESTATE

For Additional Information Contact:
Derrick Christenson
Derricksoldit@aol.com

The above information has been obtained from sources we consider reliable, but we do not guarantee it; submitted subject to errors, prior sale, withdrawal, or change in price or terms and conditions without notice.



UNIT 410

3775 Sq Ft Bay

602 Sq Ft Office

LAKE WHITNEY BUSINESS PARK



**410 NW LAKE WHITNEY PLACE
PORT SAINT LUCIE, FL**

***Christenson
Commercial***
REAL ESTATE

759 S. Federal Highway, Ste. 304
Stuart, Florida 34994

www.ChristensonCommercial.com