

FOR LEASE

OFFICE OR OFFICE/WAREHOUSE



ADDRESS: 3322 SE Gran Park Way; Stuart, FL 34997

PROPERTY SIZE: 1,875 SF to 3,875 SF

ZONING: Light Industrial

LEASE PRICE: \$10.00 a SF Gross

COMMENTS: This office/warehouse was built in 2009 and features concrete construction, Units can be divided into office/warehouse or straight office.
Please call for details

Great location...just two blocks from busy Hwy US 1 in South Stuart.

Easy access north and south

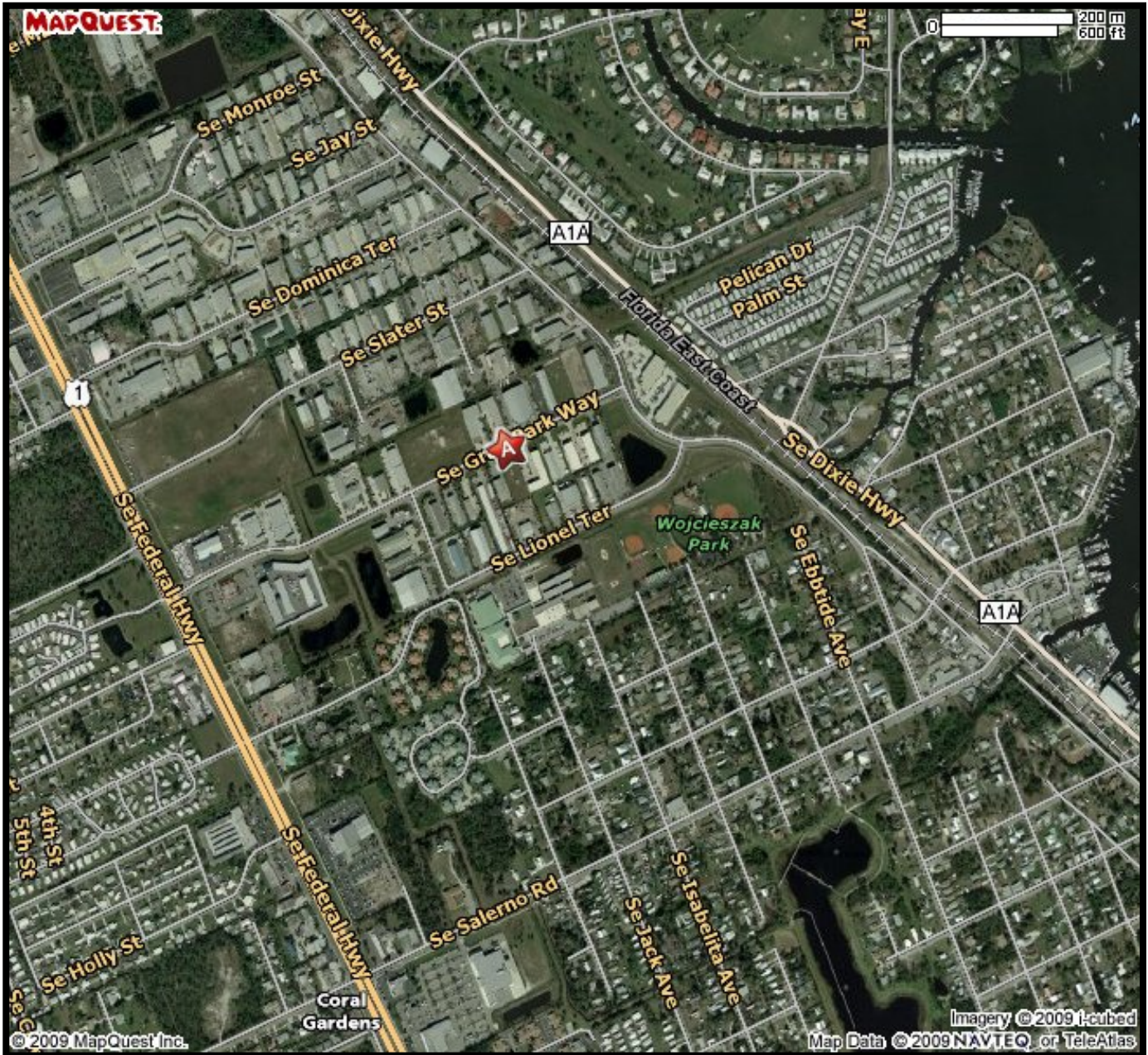
EXCLUSIVELY LISTED BY...

**Christenson
Commercial**
REAL ESTATE

759 S. Federal Highway, Ste. 304
Stuart, Florida 34994
www.ChristensonCommercial.com

For Additional Information Contact:
Derrick Christenson
(772) 419-5076
Derricksoldit@aol.com

The above information has been obtained from sources we consider reliable, but we do not guarantee it; submitted subject to errors, prior sale, withdrawal, or change in price or terms and conditions without notice.



3322 SE GRAN PARK WAY STUART, FLORIDA 34997

EXCLUSIVELY LISTED BY...

**Christenson
Commercial**
REAL ESTATE

759 S. Federal Highway, Ste. 304

Stuart, Florida 34994

www.ChristensonCommercial.com