

FOR LEASE

(2) 2,500 SF Office/Warehouse Units



ADDRESS: 3297 & 3301 SE Gran Park Way; Stuart, FL

PROPERTY SIZE: 2,500 SF

ZONING: Light Industrial

LEASE AMOUNT: \$8.50/SF (Gross)

COMMENTS: Building Features: Built in 2005, Built out offices, Concrete tilt wall construction, 18.' Clear height, 3-Phase power, 12x14 Over head doors. Excellent location in the South Stuart SPS Commerce Park.

EXCLUSIVELY LISTED BY...

759 S. Federal Highway, Ste. 304
Stuart, Florida 34994

www.ChristensonCommercial.com

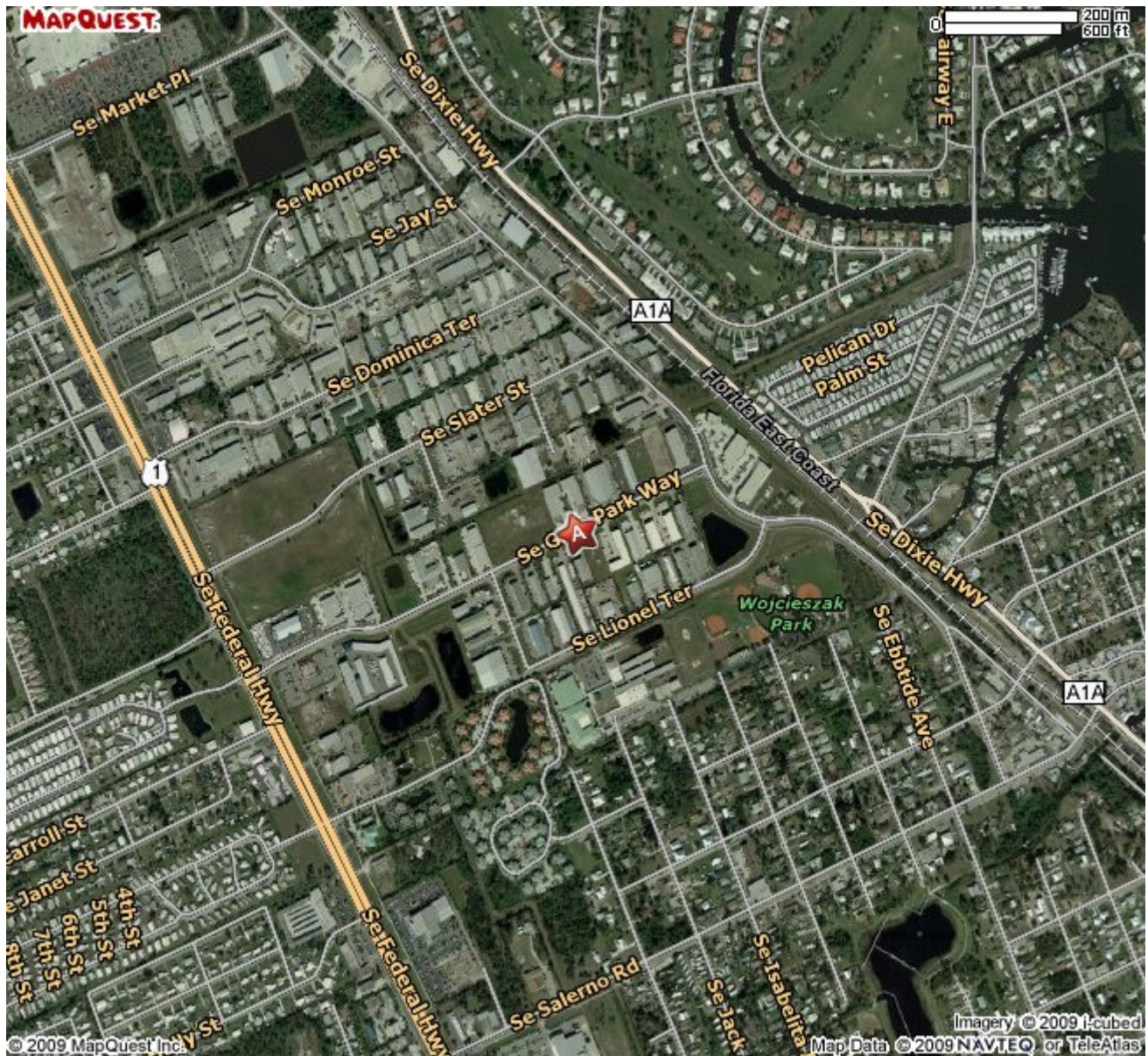
**Christenson
Commercial**
REAL ESTATE

For Additional Information Contact:

Derrick Christenson
(772)201-3154

Derricksoldit@aol.com

The above information has been obtained from sources we consider reliable, but we do not guarantee it; submitted subject to errors, prior sale, withdrawal, or change in price or terms and conditions without notice.



3297 & 3301 SE Gran Park Way; Stuart, FL 34997

EXCLUSIVELY LISTED BY...

***Christenson
Commercial***
REAL ESTATE

759 S. Federal Highway, Ste. 304
Stuart, Florida 34994

www.ChristensonCommercial.com