

# FOR LEASE

## G & S WAREHOUSE



**ADDRESS:** 1694, 1696 & 1698 SE South Niemeyer Circle;  
Port St. Lucie, FL 34952

**PROPERTY SIZE:** 1,500 SF

**ZONING:** Lt. Industrial

**LEASE AMOUNT:** \$950.00 a month (Gross)

**COMMENTS:** (3) Office/warehouse units available. Each unit has (2)  
offices, (1) handicap accessible bathroom, and a 10x10  
overhead door. Building features: Tilt-wall construction,  
Impact Glass, 1:411 SF parking ratio, 200-amp power, and  
3-phase electric.

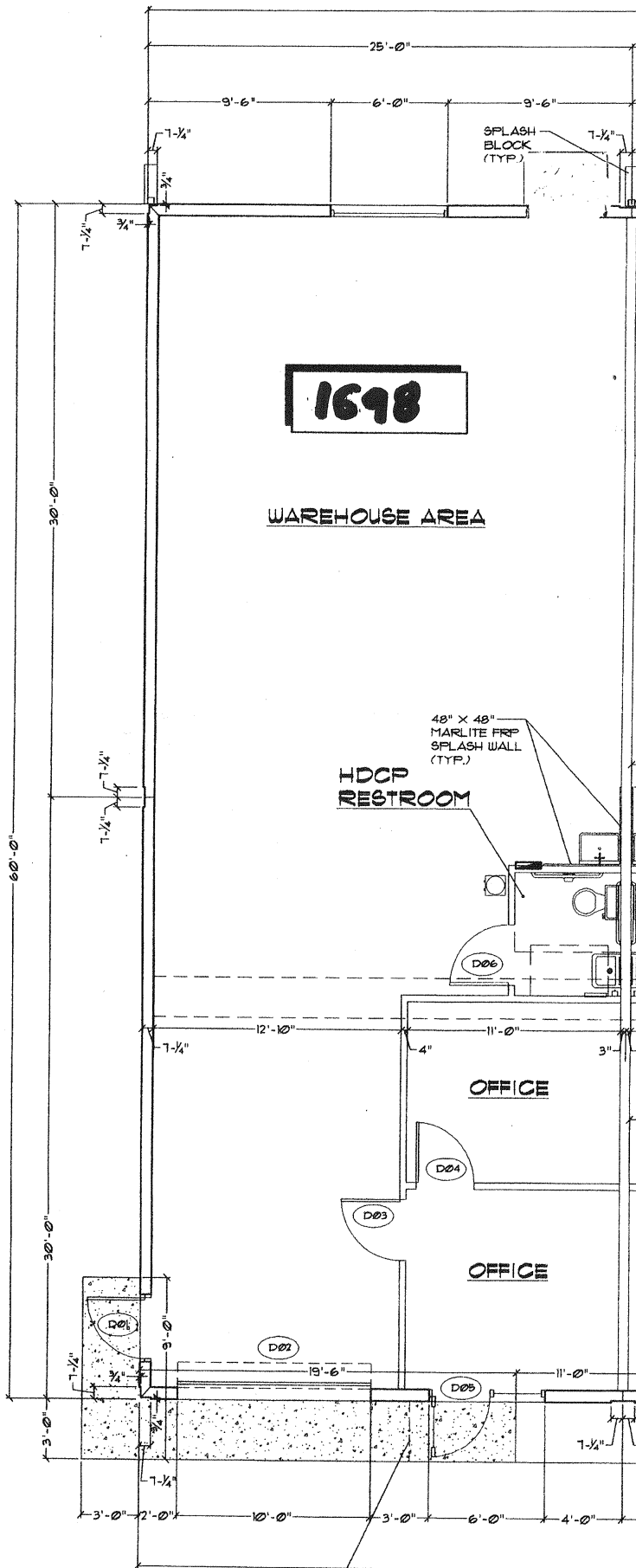
EXCLUSIVELY LISTED BY...

759 S. Federal Highway, Ste. 304  
Stuart, Florida 34994  
[www.ChristensonCommercial.com](http://www.ChristensonCommercial.com)

**Christenson**  
**Commercial**  
REAL ESTATE

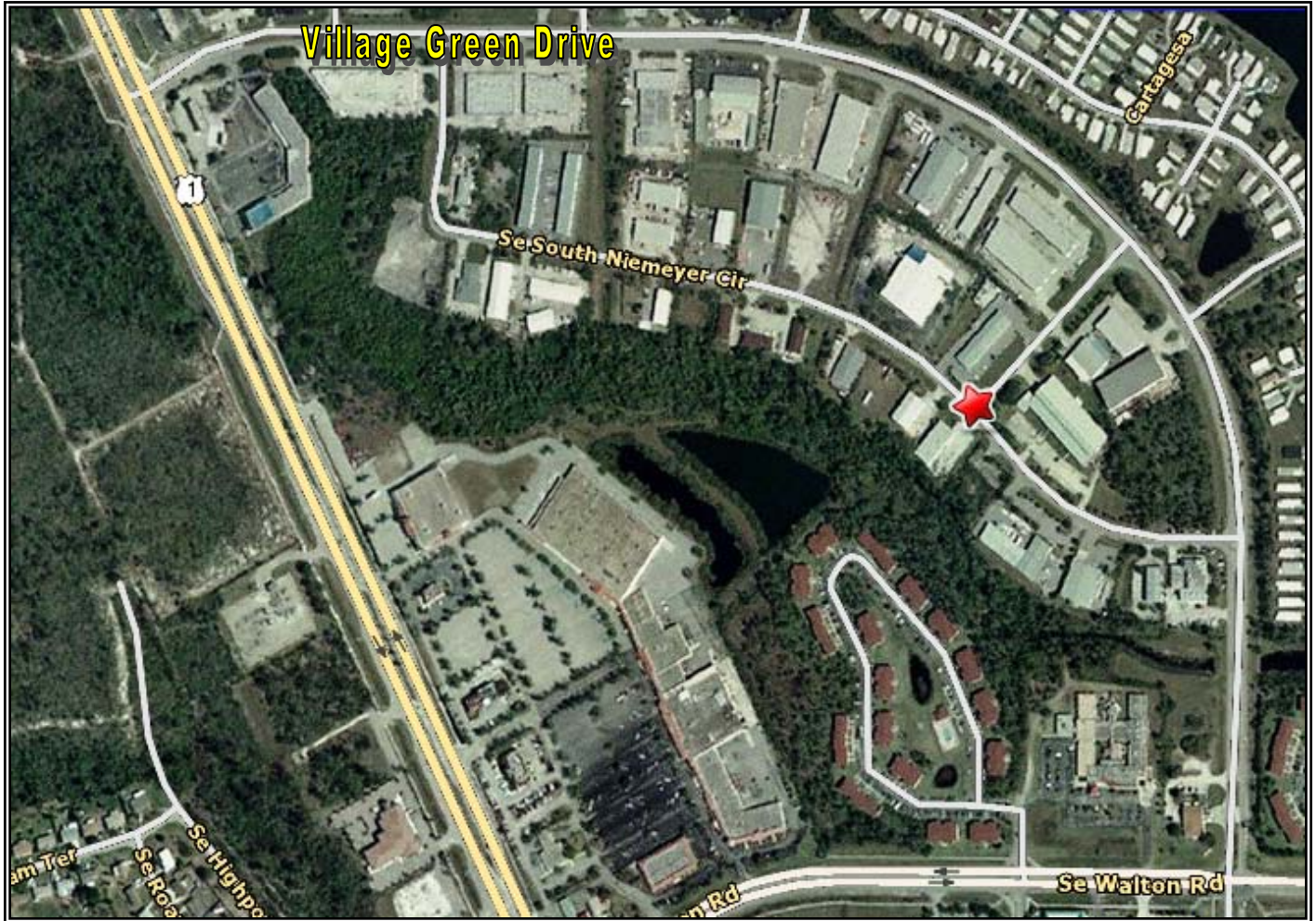
**For Additional Information Contact:**  
Derrick A Christenson  
(772) 579-6654  
[Derricksoldit@aol.com](mailto:Derricksoldit@aol.com)

The above information has been obtained from sources we consider reliable, but we do not guarantee it; submitted subject to errors, prior sale, withdrawal, or change in price or terms and conditions without notice.



LINE OF CANOPY ABOVE

# G & S WAREHOUSE



**1694, 1696 & 1698 SE SOUTH NIEMEYER CIRCLE  
PORT ST. LUCIE, FL 34952**

EXCLUSIVELY LISTED BY...

**Christenson  
Commercial**  
REAL ESTATE

759 S. Federal Highway, Ste. 304  
Stuart, Florida 34994

[www.ChristensonCommercial.com](http://www.ChristensonCommercial.com)