

# FOR LEASE

## PRIMA VISTA COMMONS



<b>ADDRESS:</b>	<u>443 Prima Vista Blvd; Port St. Lucie, FL (Unit 106)</u>
<b>PROPERTY SIZE:</b>	<u>1,637 SF</u>
<b>ZONING:</b>	<u>Professional Office</u>
<b>LEASE AMOUNT:</b>	<u>\$1,918 a Month (Gross) No CAM</u>
<b>COMMENTS:</b>	<u>Unit Features: 1st floor unit next to elevator; Spacious office layout; Large open office area, (1) enclosed office, conference room, and an ADA-compliant restroom. Prima Vista Commons is home to several successful businesses such as Friscia Engineering Company. Easy access to busy Hwy US 1, I-95, and the FL Turnpike. Location opportunities like this do not come around often.</u>

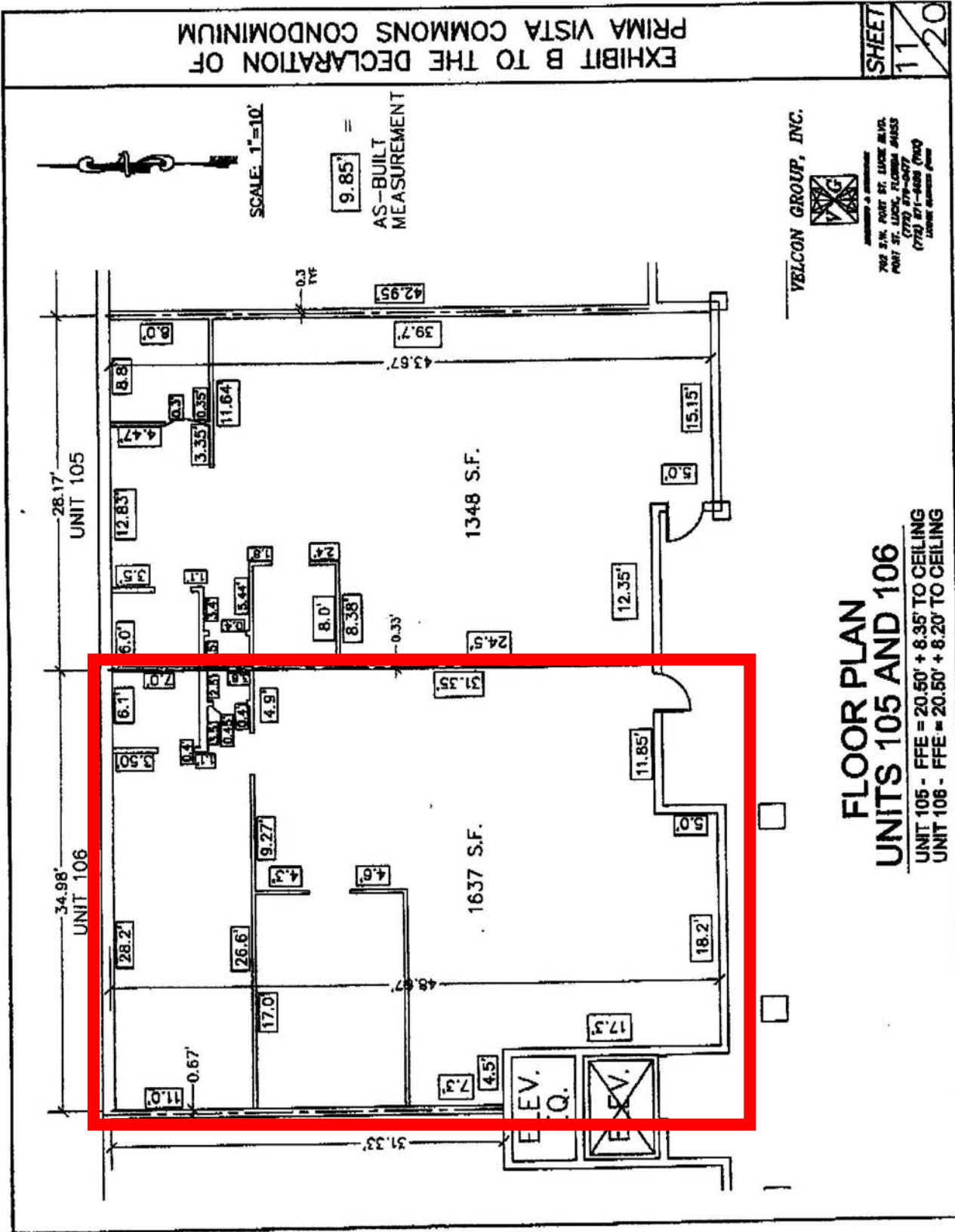
### EXCLUSIVELY LISTED BY...

759 S. Federal Highway, Ste. 304  
Stuart, Florida 34994  
[www.ChristensonCommercial.com](http://www.ChristensonCommercial.com)

**Christenson**  
**Commercial**  
**REAL ESTATE**

**For Additional Information Contact:**  
Derrick Christenson  
(772) 201-3154  
[Derricksoldit@aol.com](mailto:Derricksoldit@aol.com)

The above information has been obtained from sources we consider reliable, but we do not guarantee it; submitted subject to errors, prior sale, withdrawal, or change in price or terms and conditions without notice.



**FLOOR PLAN  
UNITS 105 AND 106**

UNIT 105 - FFE = 20.50' + 8.35' TO CEILING  
UNIT 106 - FFE = 20.50' + 8.20' TO CEILING

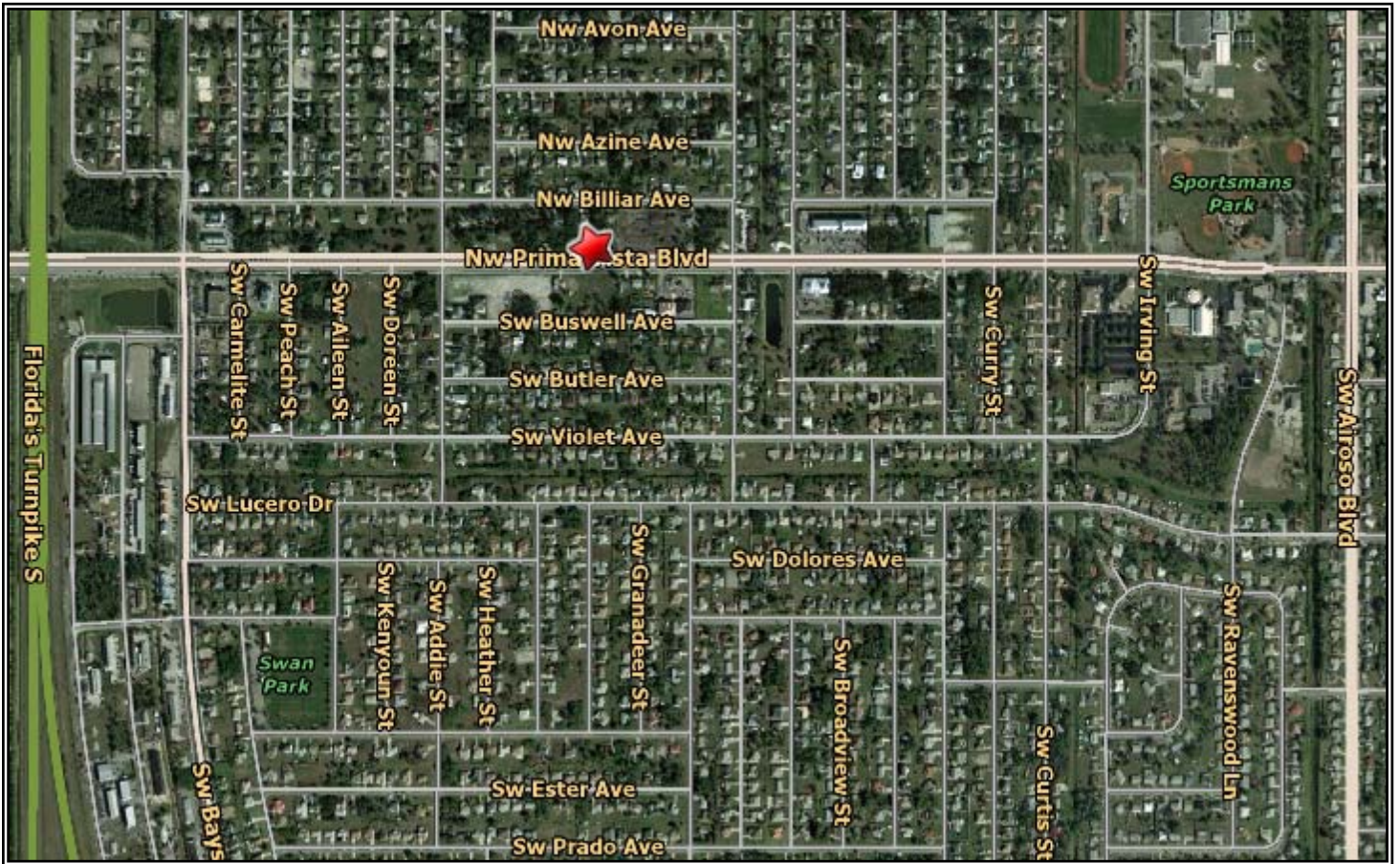
**VELCON GROUP, INC.**

780 S.W. POINT ST. SUITE 800  
PORT ST. LUCIE, FLORIDA 34953  
(772) 879-0477  
(772) 871-4688 (FAX)  
www.velcon.com

EXHIBIT B TO THE DECLARATION OF  
PRIMA VISTA COMMONS CONDOMINIUM

SHEET  
11  
20

# PRIMA VISTA COMMONS



**443 PRIMA VISTA BLVD  
PORT SAINT LUCIE, FL**

**EXCLUSIVELY LISTED BY...**

***Christenson  
Commercial***  
**REAL ESTATE**

759 S. Federal Highway, Ste. 304  
Stuart, Florida 34994

[www.ChristensonCommercial.com](http://www.ChristensonCommercial.com)