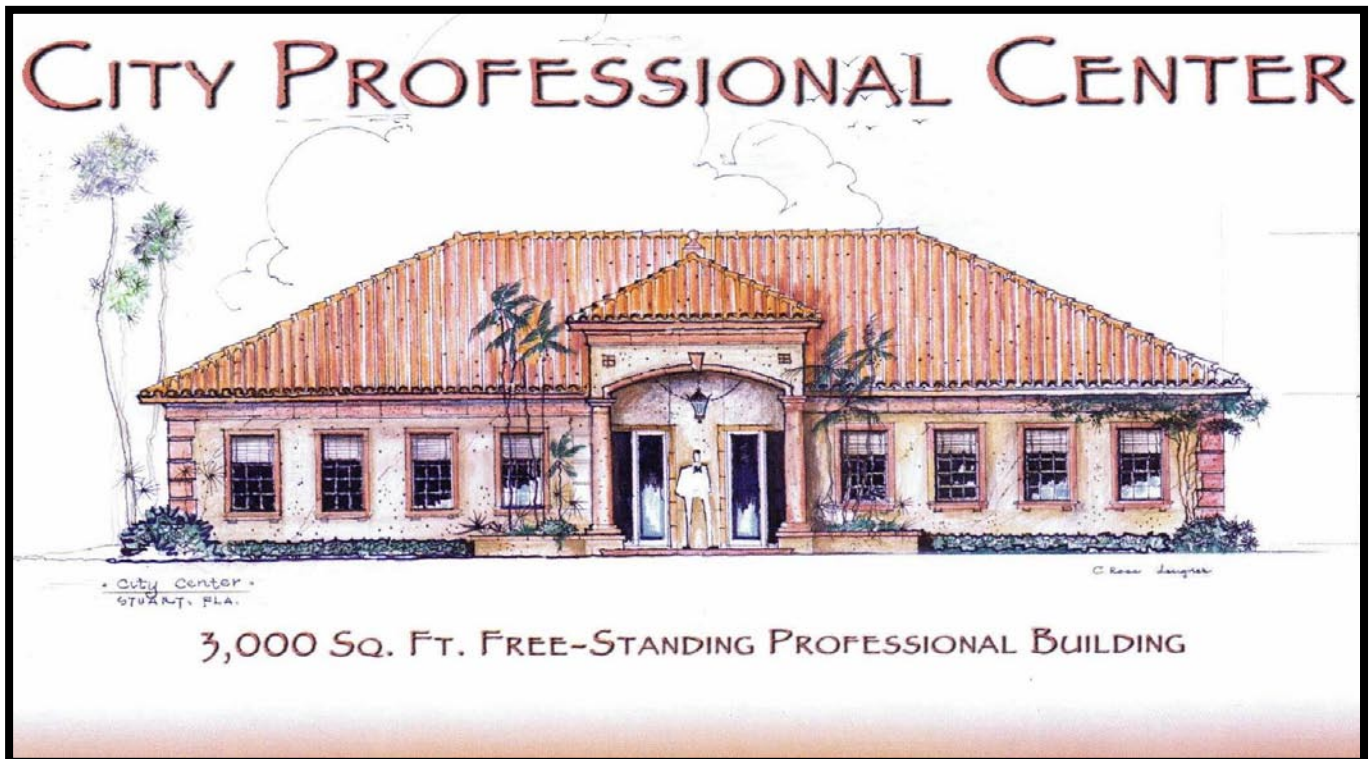


FOR LEASE



- ADDRESS:** 2112 SE Rays Way; Stuart, FL 34994
- PROPERTY SIZE:** (1) 1,500 SF Units
- ZONING:** Office
- LEASE AMOUNT:** \$1,200/Mth (Gross) per unit...Turn key!
- COMMENTS:** **NEW Class "A"** single story office building. Build-out includes: 7" crown molding, 6" base, 8' solid doors, Hardwood and marble floors, and a Coffee bar. Building features include: CBS construction with barrel tile roof and impact glass. Highly designed exterior and interior architectural details completed by master craftsmen. Located just seconds from busy Hwy US 1 and Kanner Hwy.

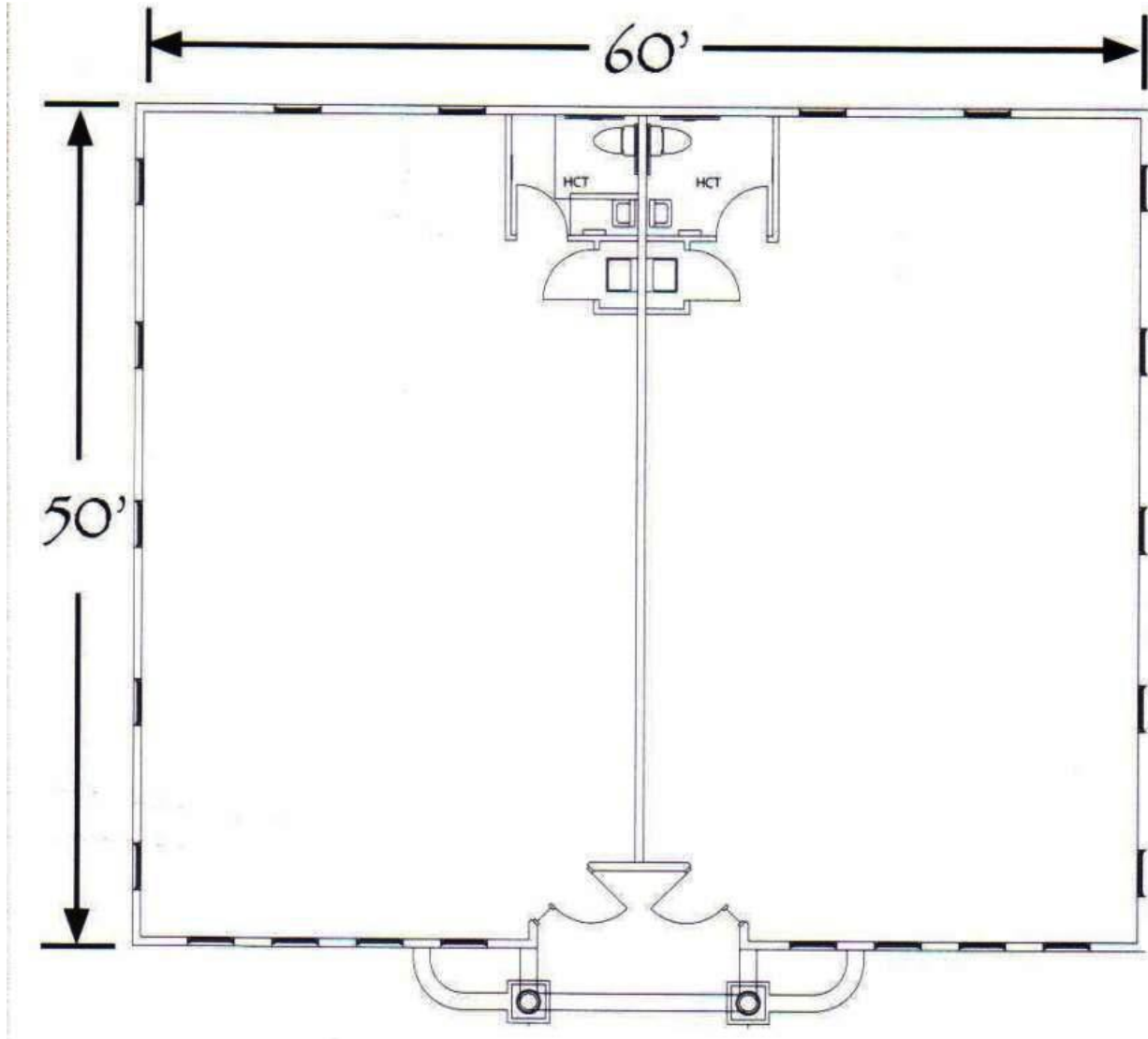
EXCLUSIVELY LISTED BY...

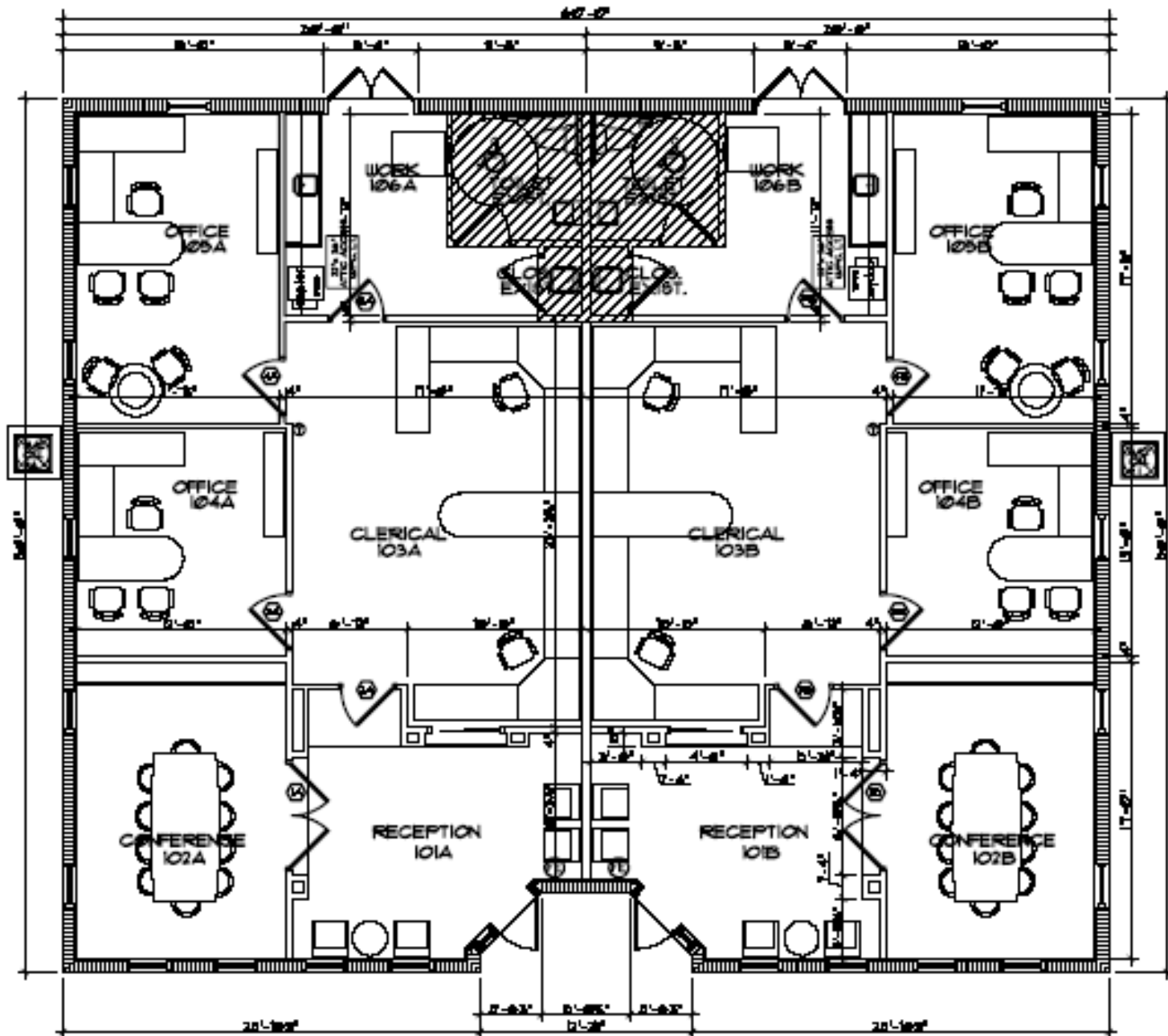
21 SW Flagler Ave
Stuart, Florida 34994
www.ChristensonCommercial.com

Christenson
Commercial
REAL ESTATE

For Additional Information Contact:
Derrick Christenson
(772) 201-3154
Derricksoldit@aol.com

The above information has been obtained from sources we consider reliable, but we do not guarantee it; submitted subject to errors, prior sale, withdrawal, or change in price or terms and conditions without notice.



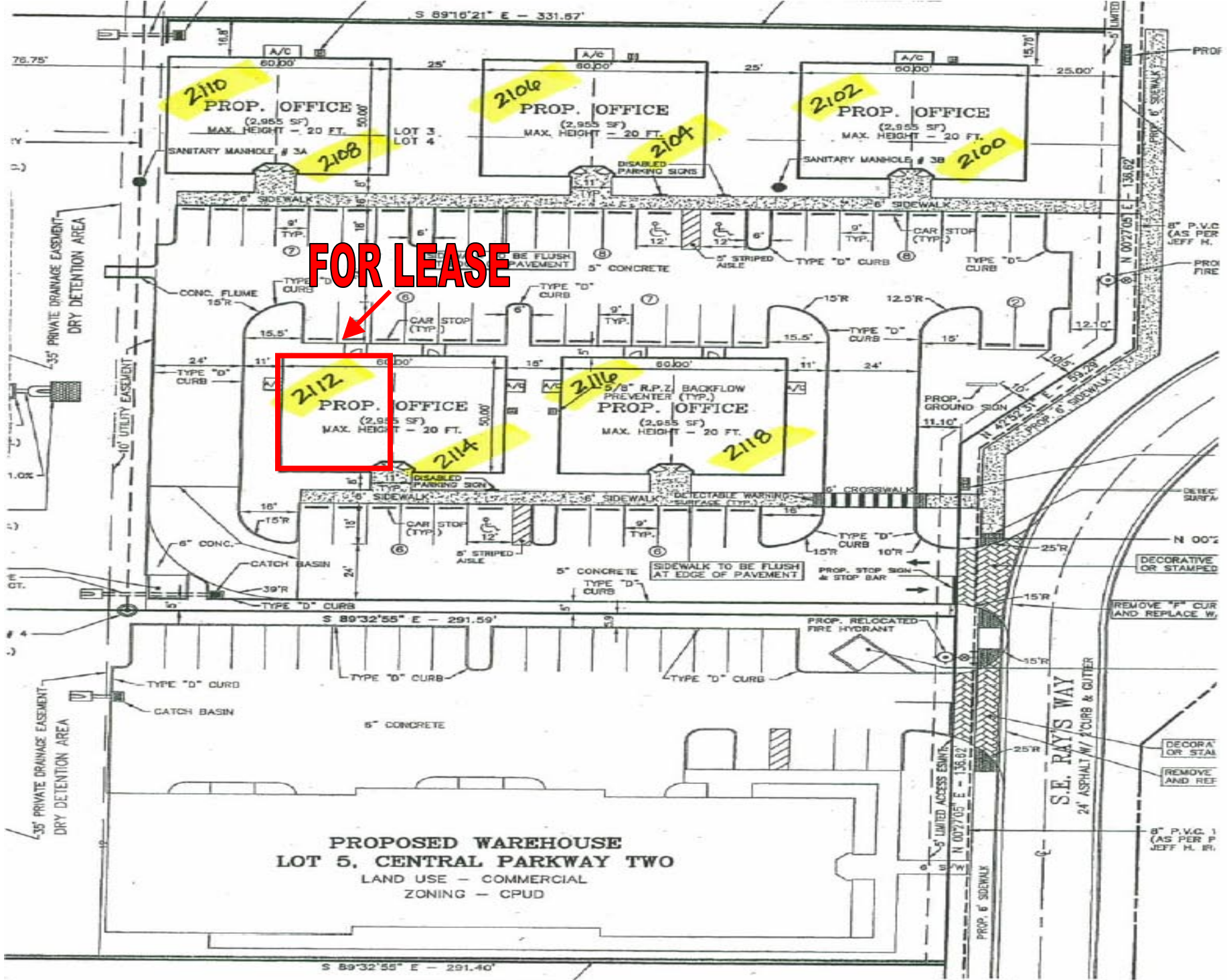
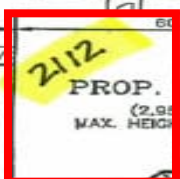


TENANT FLOOR PLANS A & B

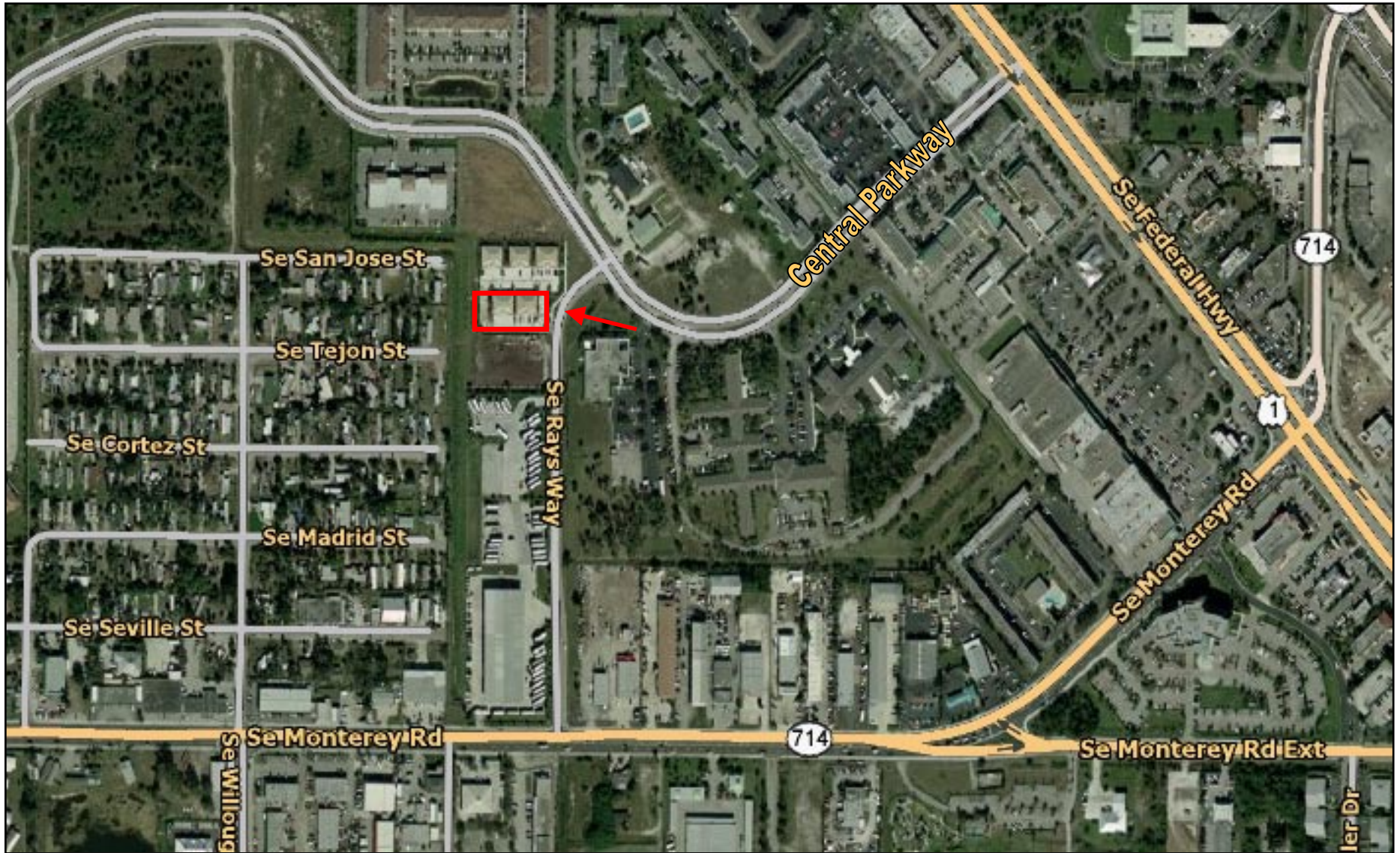
UNITS 'A' & 'B' ARE TERROR PLACES.
FIELD VERIFY ALL DIMENSIONS.
INTERIOR FURNITURE IS N/C.

1/4" = 1'-0"

FOR LEASE



CITY PROFESSIONAL CENTER



**2112 S.E. RAYS WAY
STUART, FL 34994**